

WRONG



5: Feeding your pigs

IMPORTANT MESSAGE!!!

DO NOT
FEED MEAT
SCRAPS OR
GARBAGE
TO PIGS



China suspends Canadian beef, pork imports as tensions rise

© 27 June 2019

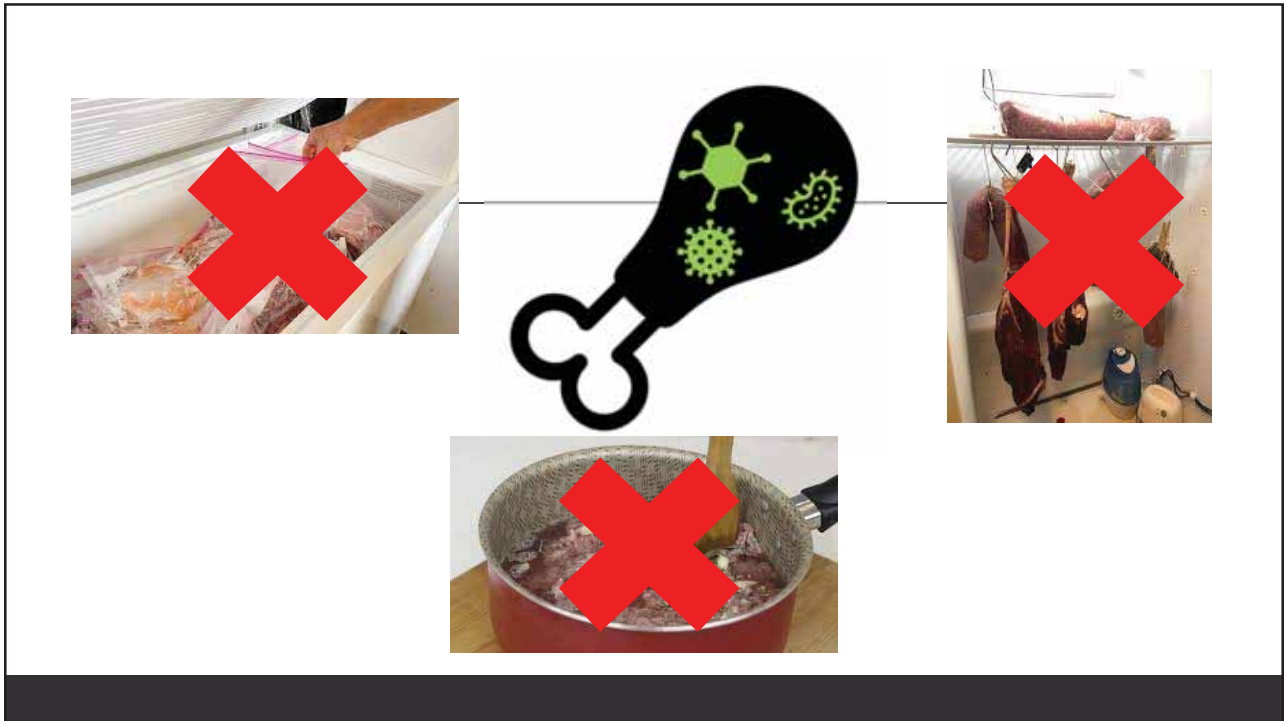


African swine fever outbreak



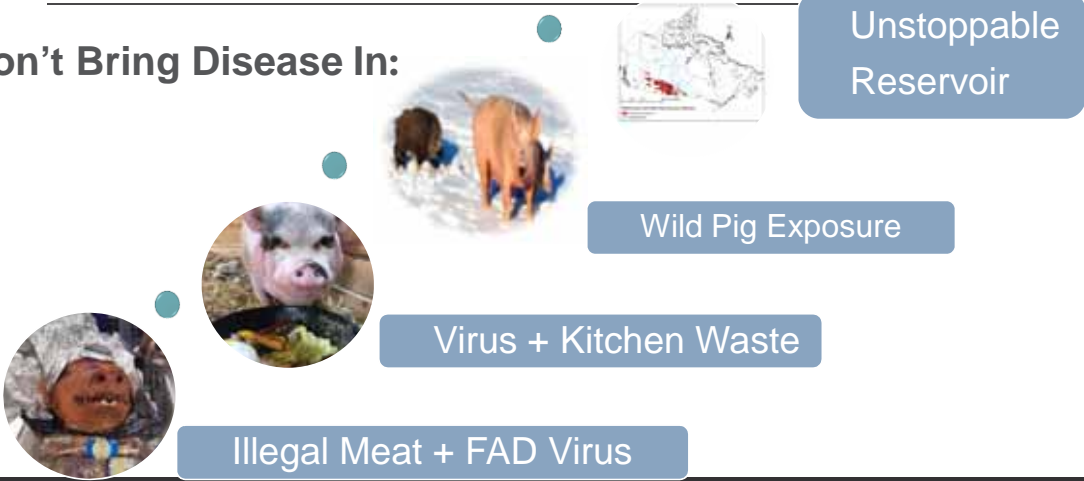






Biosecurity – Risk – courtesy Dr. Egan Brockhoff

Don't Bring Disease In:



What do pigs need?

- BALANCED DIET
- Fat, protein, carbs, vitamins, minerals, water
- One diet ≠ Fit all



Example Diets:

1. Complete Feed
2. Single/Custom Grain
3. Home-made

Complete Feed



Custom/Single Grain





Homemade



How much
to feed?

How much to feed?



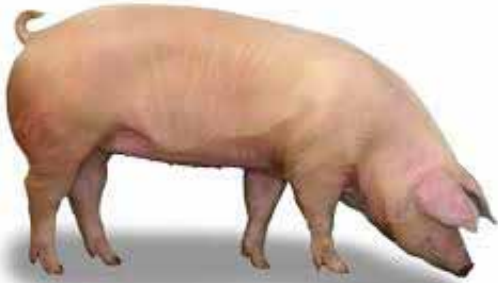
**COLOSTRUM IN
FIRST 12 HOURS!**

How much to feed?



CREEP FEED days 10-28

How much to feed?



**GROWING = 4% BW of
feed/day**

Ex. 50kg pigs = 2kg feed

How much to feed?



**PREGNANT = 1.5%
BW of feed/day**

How much to feed?



LACTATION = ad lib
(+0.5 kg/piglet)





How do I feed my pig?

- Clean troughs
- Bolted down
- Self feeding





CORRECT!



CORRECT!



How do I store feed?

- Clean, dry
- Off the ground
- Low moisture
- Avoid pests



CORRECT!



Feed Safety

- Mycotoxins
- Poisonous weeds



Mycotoxins

- Don't feed moldy feed
- Pigs off feed
- Multiple illnesses



Mycotoxins





Poisonous Weeds

- Check your pasture
- Don't feed to pigs

Proper Food = Healthy Pigs





6. Water



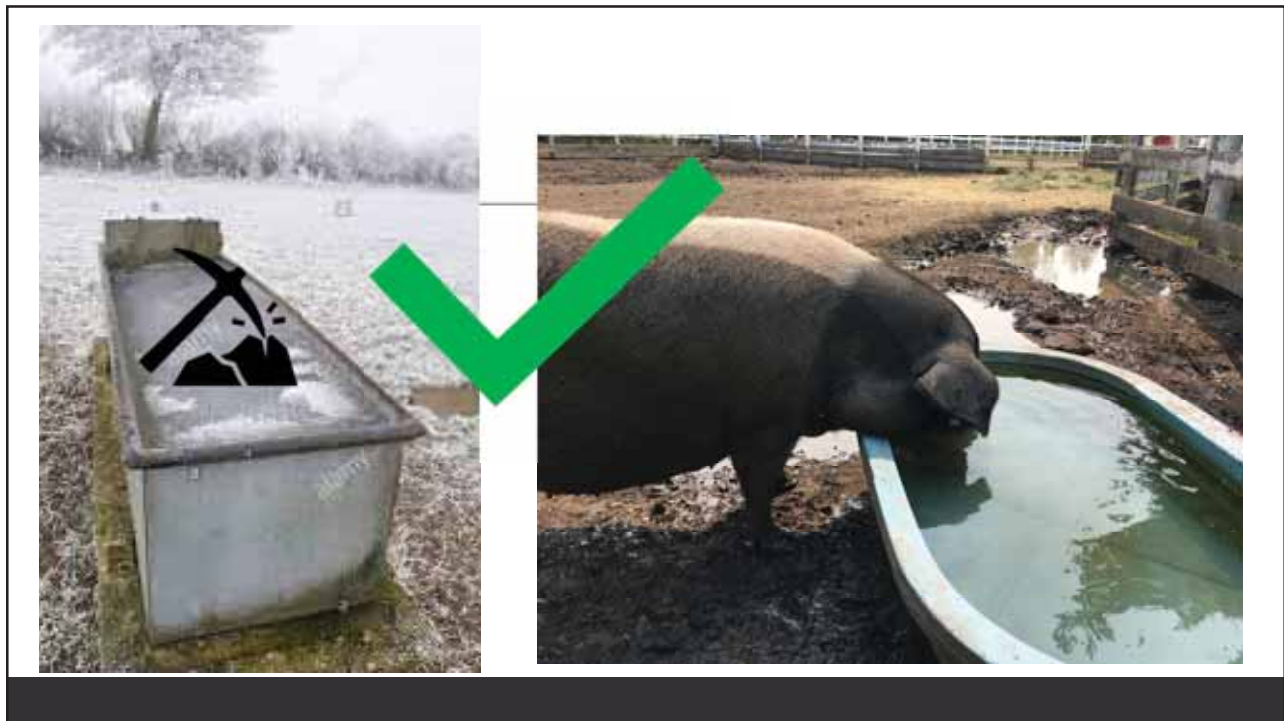
Water Basics

- Clean
- 24/7 Access
- Break up ICE!



How to deliver water?

- Trough
- Pond
- Water lines



Water Quality

1. Bacterial Contamination

Total coliforms <10

Fecal coliforms 0



Get your water tested!



7: Cleanliness & Waste Management

Cleanliness

Recommendations:

- Regularly scrape out soiled bedding
- Manure management
- Wash, disinfect, dry equipment
- Scrape old feed





CORRECT!

- Scrape soiled bedding
- Disinfect annually?
- Let rooms dry!

CORRECT!

- Wash, disinfect, dry
- Boots, buckets, medical supplies
- Feeders, water troughs!





Manure

Recommendations:

- Composting
- Stockpiling (safety!)
- Removal



CORRECT!

Organized compost



CORRECT!

Stock pile
-- for manure spread





WRONG!

Do not let manure
contaminate water

FREQUENTLY ASKED QUESTIONS

CAN I FEED GROCERIES THAT ARE GOING BAD?



It is OKAY to feed things like vegetables, bread, cereals, etc going bad.

It is ILLEGAL to feed any meat.

CAN I FEED TABLE SCRAPS?



No! Do not feed ANYTHING that has potentially come into contact with meat.

CAN I FEED GARDEN VEGGIES?

YES



CAN I FEED MEAT?

**NO! IT IS
ILLEGAL**



SUMMARY

In Summary...

1. PID number & PigTRACE
2. PREP before you PURCHASE
3. Buy healthy pigs from healthy places
4. Have good housing and fencing
5. Feed a complete feed
6. Water is essential! 24/7 access
7. Clean, disinfect, & dry



END